



Emerging & Beginning Writer Strategies with PixWriter

Important Functions and Keys

	Function	Keys to Use
	Delete Button	Control + Click button
	Move Button	Shift + Drag button
	Duplicate Button	Shift + Click button
	Select Border Color	Alt/Option + Click Color
	Color Button Border	Alt/Option + Click button
	Remove Border Color	Shift + Alt/Option + Click Button

Word Bank Size and Uses

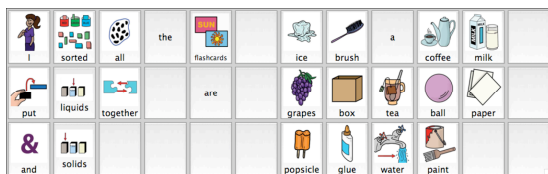


4 button word bank:

Large pictures for single choices.
Easily show short sentence or phrase.
Introduce left-to-right story sequence.
Introduce left-to-right simple sentence.

16 button word bank:

Introduce left-to-right sentence structure.
Practice sentence patterns.
Express original thought.
Mixed structure support with choices.



36 button word bank:

Mixed structure and word groupings.
Retell with simple complete sentence structures.
Parts of sentence organization.



Make Sentence Button Use Target Word

1. Enter sentence in Target Word box. Start with capital letter and end with punctuation.

Note: Target Word holds 23 characters including spaces and punctuation.

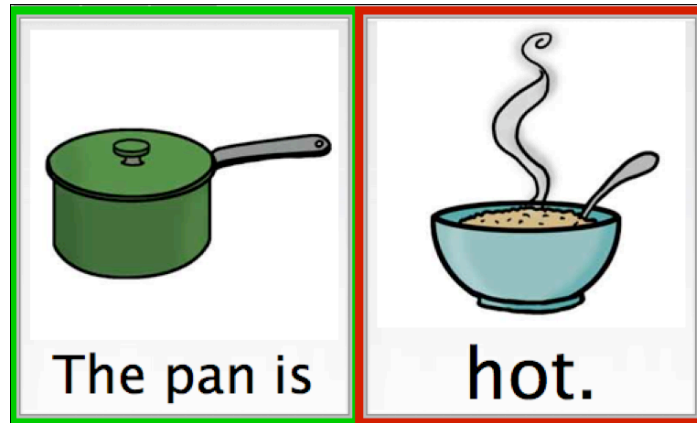
2. Enter name of picture to use in Alternate picture box.

3. Select Picture for Target Word. If desired picture appears in Target Picture box, go to step 4.

To select an alternate image in the LSP Thesaurus, click the image so that it appears in the Target Picture box.

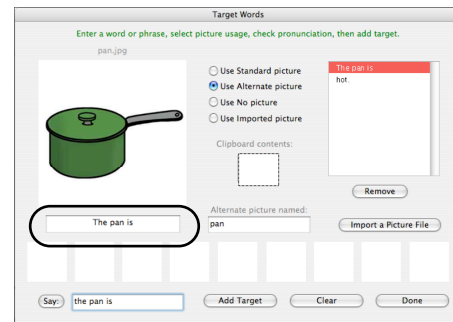
4. Click Add Target to make the button with the sentence and picture.
5. Repeat for additional buttons.
6. Click Done when finished.

Make Sentence Phrase Buttons Use Target Word



Beginning Sentence Phrases:

1. Enter beginning of sentence/phrase in Target Word box.
2. Use capital letter for first word.
3. Enter name of picture to use in Alternate picture box.
4. Click Add Target.

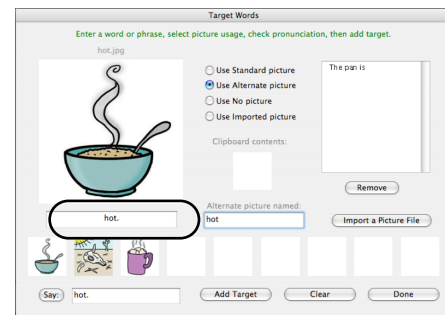


Sentence Ending Words or Phrases:

1. Enter the word or phrase in Target Word box.

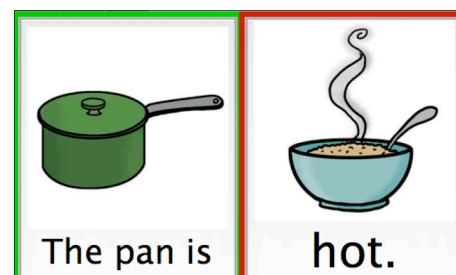
Include punctuation in target word.

2. Enter name of picture to use in Alternate picture box.
3. Click Add Target.

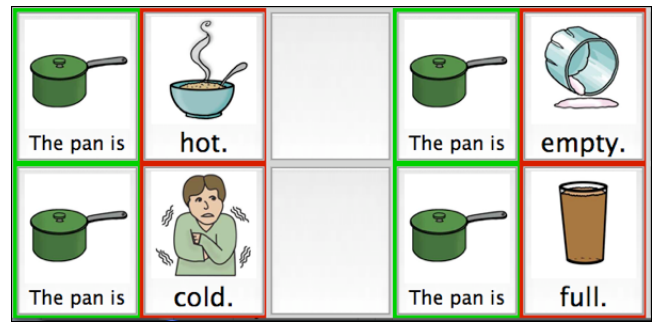


Color Borders to Scaffold Sentence Structure

1. Use one color for beginning phrase button: Alt/Option + Click
2. Use second color for ending phrase button. Alt/Option + Click

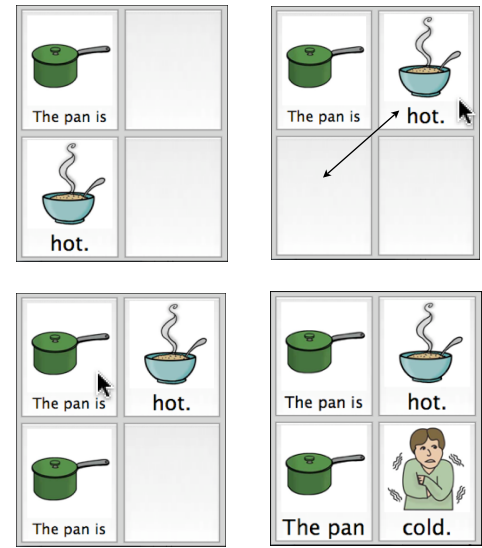


Making Sentence Patterns or Frames with duplicate phrase buttons



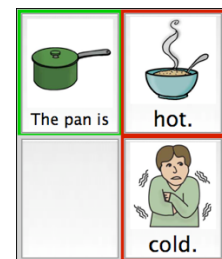
1. Make the sentence beginning phrase button and sentence end button.
2. Drag the sentence ending button into position:
Shift + drag
3. Duplicate the sentence beginning button:
Shift + Click.

Move the button into position, if needed:
Shift+ Drag

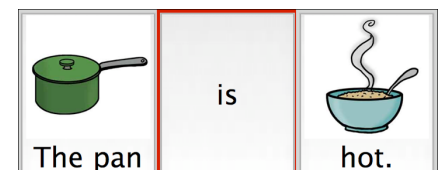


Reducing Phrase Supports:

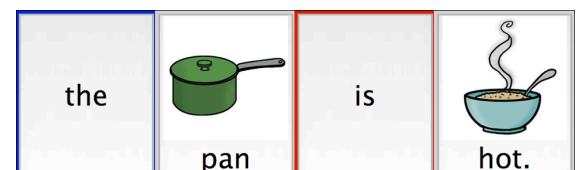
Remove duplicated button.



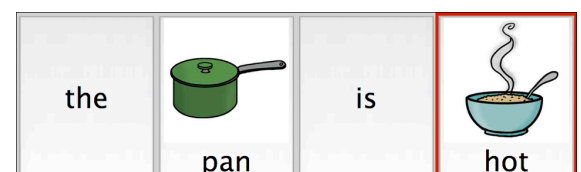
Separate the verb into it's own button.



Make a button for each word in the sentence.



Do not embed the punctuation in any buttons.



Expectations Affect Writing Success

- | | |
|---|---|
| <ul style="list-style-type: none"> all selections are accepted as writing words in mixed order incomplete thoughts words in correct order | <ul style="list-style-type: none"> complete thoughts include all little words use correct grammar Sentences begin with capital letter Sentences have correct punctuation |
|---|---|

Word Bank Variables that Affect Writing Success

<p>Task Complexity</p> <p>Number of Buttons/Choices</p> <p>All choices correct</p> <p>Some correct choices and some foils</p> <p>Reduce picture clues on buttons</p> <p>Remove picture clues on buttons</p>	<p>Language Complexity</p> <p>Buttons contain complete sentences</p> <p>Use phrase buttons for beginning, middle and end of sentence</p> <p>Embed punctuation in button for end of sentence use</p> <p>Introduce some individual word buttons with phrase buttons</p> <p>All buttons convey individual words or concepts</p>
<p>Organization Complexity</p> <p>Left-to-right placement to make a simple sentence</p> <p>Left-to-right placements for several sentences to tell a story</p> <p>Group buttons by sentence structure (Subject Verb Object)</p> <p>Group buttons by nouns, verbs, adjectives, etc.</p> <p>Mixed organization - some words grouped some not</p> <p>Random organization</p>	<p>Use of Color Scaffold</p> <p>Color border indicates a sentence (Buttons are in left to right sequences. First sentence is one color; second sentence is another color, etc.)</p> <p>Color borders by order. (Green/beginning of sentence; Yellow/middle of sentence; Red/end of sentence)</p> <p>Color borders by emphasis for word group (adjectives, synonyms, small words, theme words, etc.)</p> <p>Color borders for select button group (e.g. small words or key vocabulary only)</p> <p>Do not use color borders</p>